



## Workforce Information Update

### **Danville MSA**

Vermilion County

**Economic Information and Analysis**  
Illinois Department of Employment Security

For additional information  
[www.IDES.Illinois.gov](http://www.IDES.Illinois.gov)



**ILLINOIS DEPARTMENT OF EMPLOYMENT SECURITY**  
Economic Information & Analysis Division

	Current Month				March 2023				February
	March 2024		March 2023		March 2023		February 2023		February 2024
	Labor Force	Employed	Unemployment Number	Unemployment Rate	Labor Force	Employed	Unemployment Number	Unemployment Rate	2024 Rate
<b>Champaign-Urbana MSA</b>	<b>130,616</b>	<b>125,061</b>	<b>5,555</b>	<b>4.3</b>	<b>126,577</b>	<b>121,802</b>	<b>4,775</b>	<b>3.8</b>	<b>4.4</b>
Champaign County	114,959	110,060	4,899	4.3	111,343	107,202	4,141	3.7	4.4
Ford County	6,615	6,315	300	4.5	6,434	6,143	291	4.5	4.5
Piatt County	9,042	8,686	356	3.9	8,800	8,457	343	3.9	4.3
<b>Danville, IL MSA</b>	<b>31,962</b>	<b>30,154</b>	<b>1,808</b>	<b>5.7</b>	<b>31,623</b>	<b>29,819</b>	<b>1,804</b>	<b>5.7</b>	<b>6.1</b>
<b>Counties</b>									
DeWitt County	7,562	7,216	346	4.6	7,468	7,125	343	4.6	4.8
Douglas County	10,314	9,961	353	3.4	10,057	9,722	335	3.3	3.8
Edgar County	9,104	8,737	367	4.0	8,885	8,577	308	3.5	4.1
Iroquois County	12,971	12,246	725	5.6	12,721	12,042	679	5.3	5.8
Livingston County	16,383	15,627	756	4.6	15,878	15,186	692	4.4	4.8
McLean County	91,344	87,572	3,772	4.1	89,720	86,603	3,117	3.5	4.3
Macon County	44,298	41,543	2,755	6.2	45,847	42,930	2,917	6.4	6.4
Moultrie County	7,079	6,819	260	3.7	7,171	6,928	243	3.4	4.0
<b>Cities</b>									
Champaign City	49,189	47,119	2,070	4.2	47,533	45,896	1,637	3.4	4.3
Danville City	11,714	10,975	739	6.3	11,546	10,853	693	6.0	6.6
Urbana City	22,837	21,848	989	4.3	22,069	21,280	789	3.6	4.6
<b>Illinois</b>	<b>6,509,891</b>	<b>6,186,924</b>	<b>322,967</b>	<b>5.0</b>	<b>6,403,723</b>	<b>6,125,176</b>	<b>278,547</b>	<b>4.3</b>	<b>5.3</b>
<b>United States (in thousands)</b>	<b>167,960</b>	<b>161,356</b>	<b>6,604</b>	<b>3.9</b>	<b>166,783</b>	<b>160,741</b>	<b>6,043</b>	<b>3.6</b>	<b>4.2</b>

Data not seasonally adjusted  
Current month data are preliminary

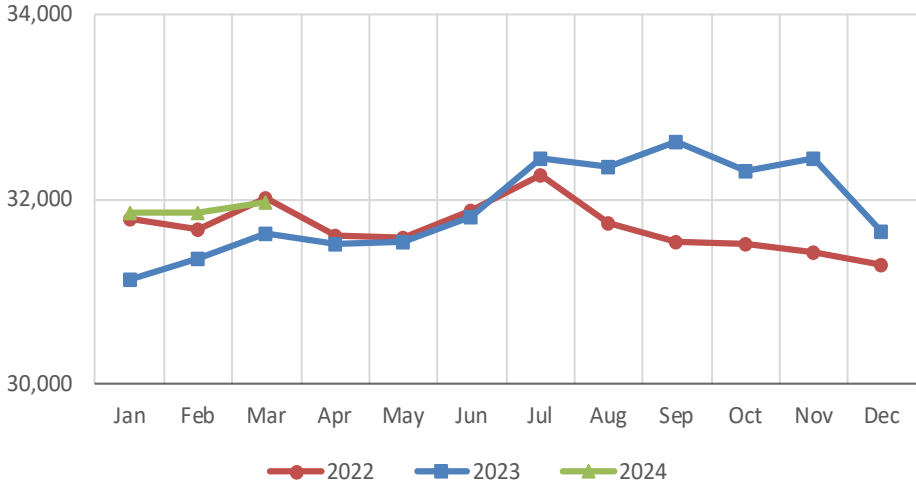
<https://ides.illinois.gov/resources/labor-market-information/laus.html>

# Danville MSA

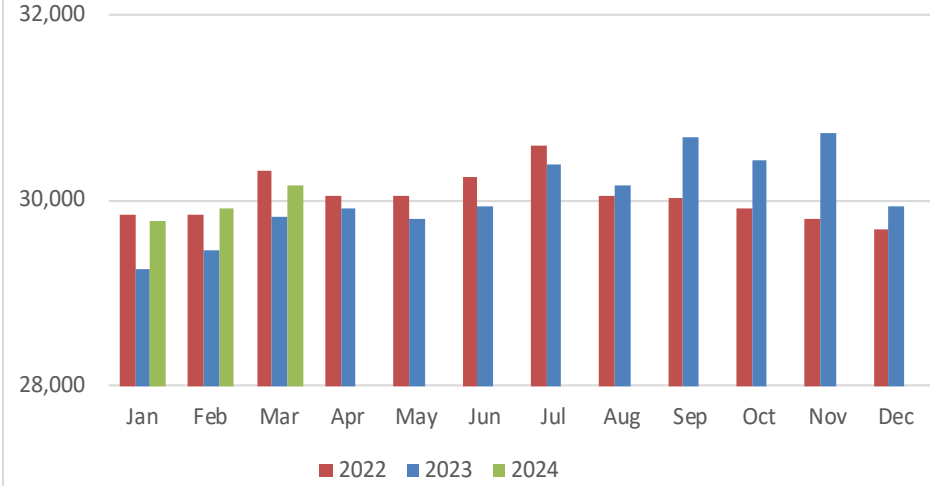
## Labor Force Information- Not Seasonally Adjusted

### March 2024

#### Total Labor Force

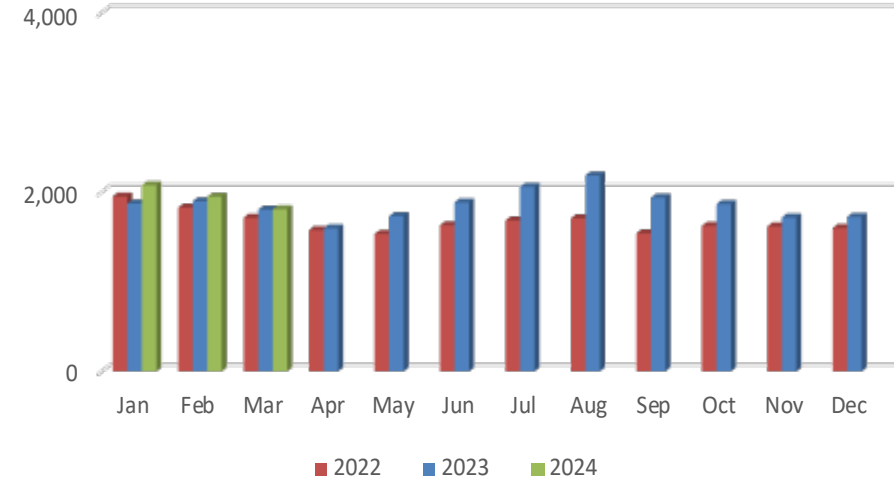


#### Number of Employed

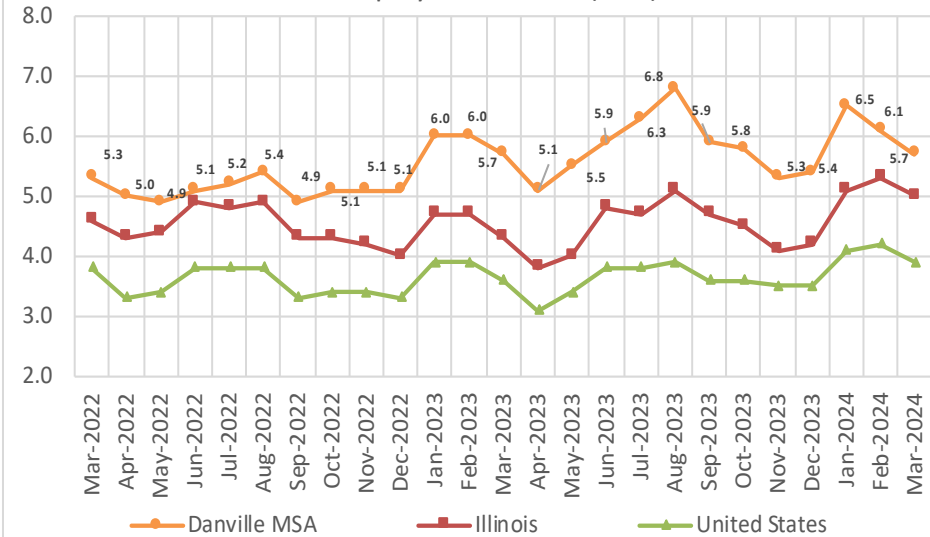


Note: Current month is preliminary

#### Number of Unemployed



#### Unemployment Rates (NSA)



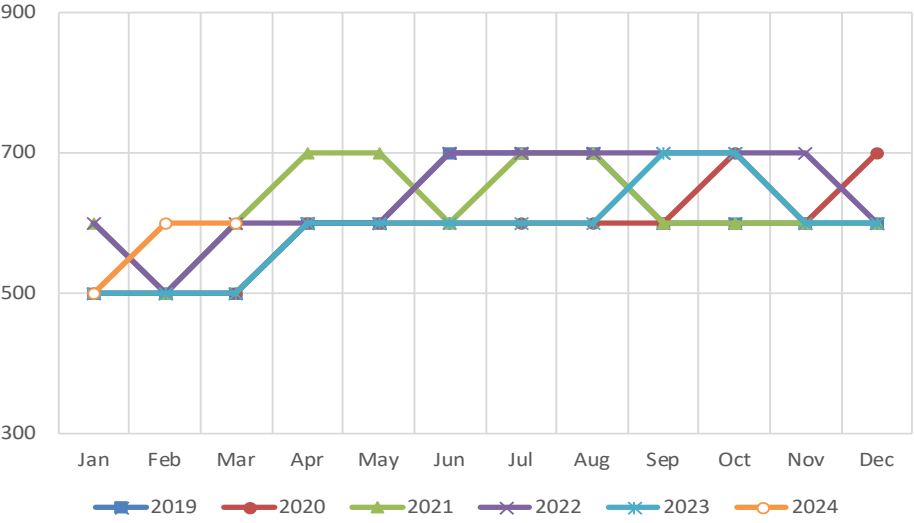
**Danville MSA**  
Vermilion County

Current Employment Statistics and  
Labor Force Information

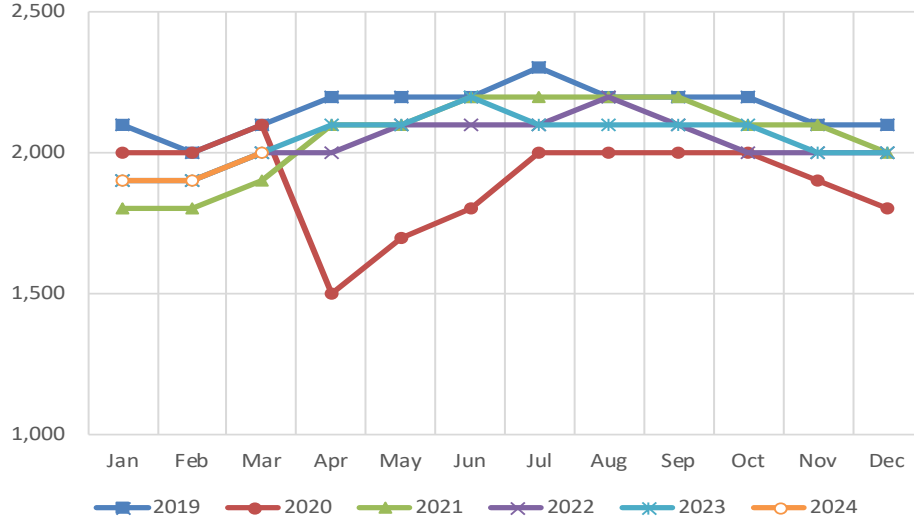
Industry	Mar-24	Feb-24	Mar-23	Month Ago		Year Ago	
<i>Labor Force Information</i>				#	%	#	%
Labor Force	31,962	31,869	31,623	93	0.3%	339	1.1%
Employment	30,154	29,921	29,819	233	0.8%	335	1.1%
Unemployment	1,808	1,948	1,804	-140	-7.2%	4	0.2%
<b>Percentage (Rate)</b>	5.7%	6.1%	5.7%				
<i>Employment by Industry Information</i>							
<b>Total Nonfarm</b>	26,800	26,700	26,500	100	0.4%	300	1.1%
Construction-Mining	600	600	500	0	0.0%	100	20.0%
Manufacturing	4,100	4,100	4,400	0	0.0%	-300	-6.8%
Wholesale Trade	2,000	2,000	2,100	0	0.0%	-100	-4.8%
Retail Trade	3,000	3,000	2,900	0	0.0%	100	3.4%
Transportation-Warehousing-Utilities	1,800	1,800	1,700	0	0.0%	100	5.9%
Information	100	100	100	0	0.0%	0	0.0%
Financial Activities	1,400	1,400	1,400	0	0.0%	0	0.0%
Professional-Business Services	1,600	1,600	1,600	0	0.0%	0	0.0%
Education-Health Services	3,200	3,200	2,900	0	0.0%	300	10.3%
Leisure-Hospitality	2,000	1,900	2,000	100	5.3%	0	0.0%
Other Services	1,200	1,200	1,200	0	0.0%	0	0.0%
Government	5,800	5,800	5,700	0	0.0%	100	1.8%

# Danville MSA Employment by Industry March 2024

### Construction-Mining Employment

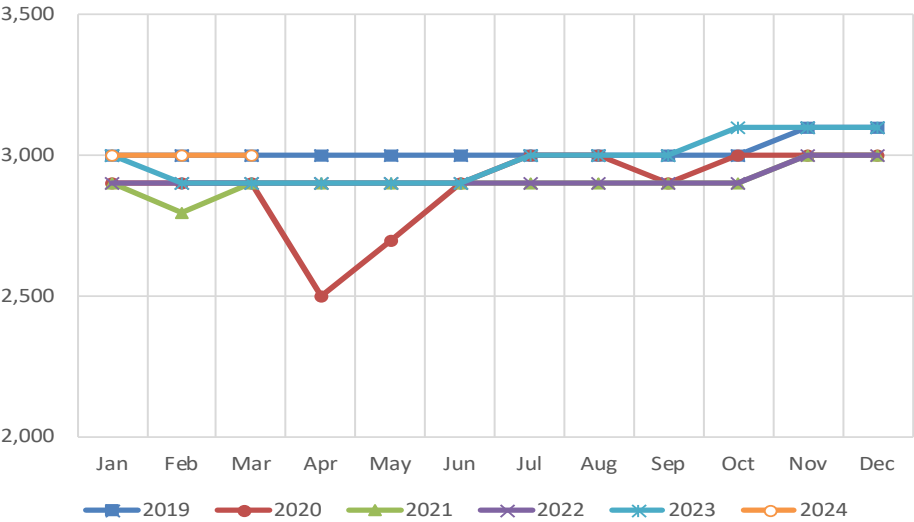


### Leisure-Hospitality Employment

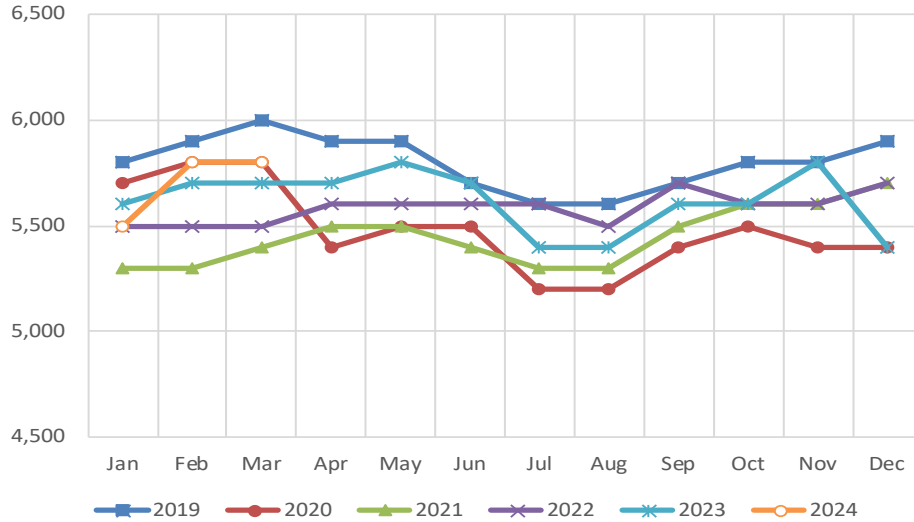


Note: Current month is preliminary

### Retail Trade Employment



### Government Employment





Danville MSA  
Employment by Industry  
March 2024

## Employment by Industry Share

