



Workforce Information Update

Danville MSA

Vermilion County

Economic Information and Analysis
Illinois Department of Employment Security

For additional information
www.IDES.Illinois.gov



ILLINOIS DEPARTMENT OF EMPLOYMENT SECURITY

Economic Information & Analysis Division

	Current Month October 2023				October 2022				September 2023
	Labor Force	Employed	Unemployment Number	Unemployment Rate	Labor Force	Employed	Unemployment Number	Unemployment Rate	2023 Rate
Champaign-Urbana MSA	129,344	123,909	5,435	4.2	127,524	123,126	4,398	3.4	4.8
Champaign County	113,880	109,050	4,830	4.2	112,057	108,139	3,918	3.5	4.8
Ford County	6,523	6,254	269	4.1	6,569	6,353	216	3.3	4.6
Piatt County	8,941	8,605	336	3.8	8,898	8,634	264	3.0	4.3
Danville, IL MSA	32,835	30,957	1,878	5.7	31,830	30,363	1,467	4.6	6.3
<u>Counties</u>									
DeWitt County	7,509	7,185	324	4.3	7,491	7,229	262	3.5	4.7
Douglas County	10,312	9,960	352	3.4	10,273	9,972	301	2.9	4.1
Edgar County	9,394	9,048	346	3.7	9,302	9,006	296	3.2	4.1
Iroquois County	12,351	11,796	555	4.5	12,749	12,272	477	3.7	4.8
Livingston County	15,783	15,128	655	4.2	15,752	15,193	559	3.5	4.6
McLean County	90,779	87,170	3,609	4.0	89,680	86,725	2,955	3.3	4.5
Macon County	45,621	42,860	2,761	6.1	45,583	43,351	2,232	4.9	6.7
Moultrie County	7,595	7,327	268	3.5	7,470	7,250	220	2.9	4.1
<u>Cities</u>									
Champaign City	48,841	46,687	2,154	4.4	47,987	46,297	1,690	3.5	5.0
Danville City	12,124	11,267	857	7.1	11,697	11,051	646	5.5	7.6
Urbana City	22,680	21,647	1,033	4.6	22,342	21,466	876	3.9	5.2
Illinois	6,457,152	6,164,444	292,708	4.5	6,465,052	6,190,926	274,126	4.2	4.9
United States (in thousands)	167,774	161,676	6,098	3.6	164,753	159,144	5,609	3.4	3.6

Data not seasonally adjusted
Current month data are preliminary

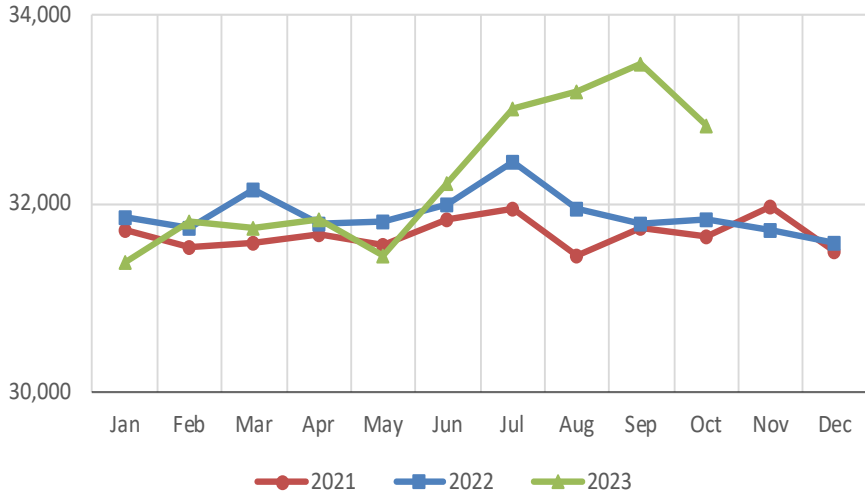
<https://ides.illinois.gov/resources/labor-market-information/laus.html>

Danville MSA

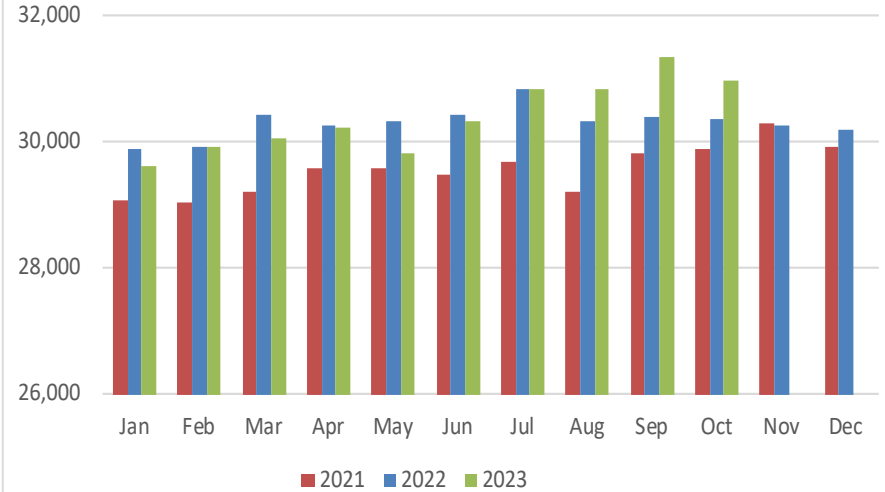
Labor Force Information- Not Seasonally Adjusted

October 2023

Total Labor Force

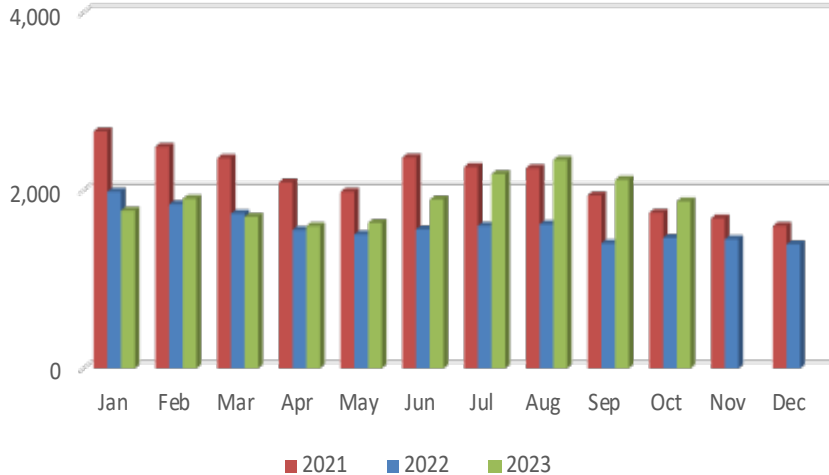


Number of Employed

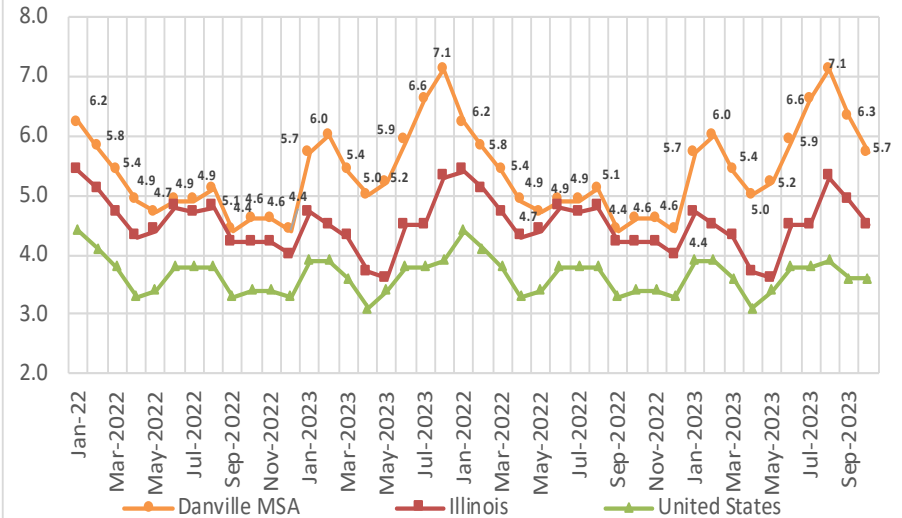


Note: Current month is preliminary

Number of Unemployed



Unemployment Rates (NSA)



Danville MSA
Vermilion County

Current Employment Statistics and
Labor Force Information

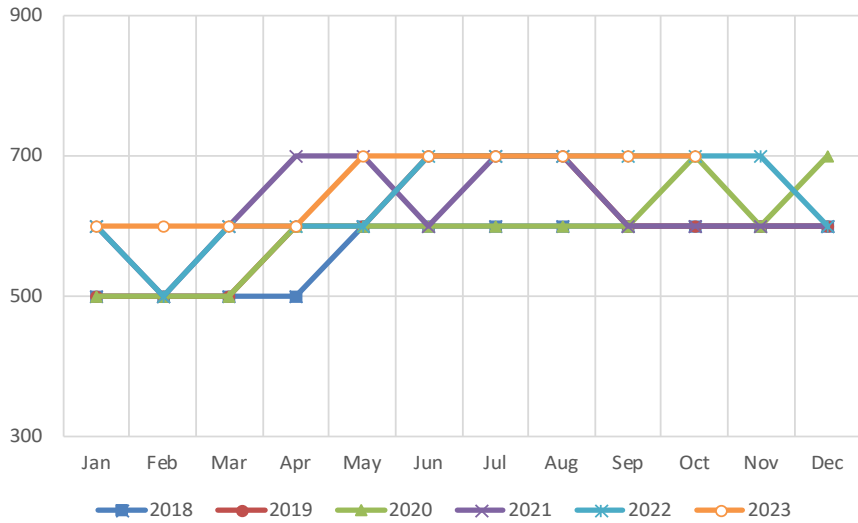
Industry	Oct-23	Sep-23	Oct-22	Month Ago		Year Ago	
<i>Labor Force Information</i>				#	%	#	%
Labor Force	32,835	33,475	31,830	-640	-1.9%	1005	3.2%
Employment	30,957	31,354	30,363	-397	-1.3%	594	2.0%
Unemployment	1,878	2,121	1,467	-243	-11.5%	411	28.0%
Percentage (Rate)	5.7%	6.3%	4.6%				
<i>Employment by Industry Information</i>							
Total Nonfarm	27,800	27,900	27,000	-100	-0.4%	800	3.0%
Construction-Mining	700	700	700	0	0.0%	0	0.0%
Manufacturing	4,300	4,300	4,300	0	0.0%	0	0.0%
Wholesale Trade	2,100	2,100	2,100	0	0.0%	0	0.0%
Retail Trade	2,900	2,900	2,900	0	0.0%	0	0.0%
Transportation-Warehousing-Utilities	1,800	1,800	1,800	0	0.0%	0	0.0%
Information	100	100	100	0	0.0%	0	0.0%
Financial Activities	1,500	1,500	1,400	0	0.0%	100	7.1%
Professional-Business Services	1,700	1,700	1,800	0	0.0%	-100	-5.6%
Educational-Health Services	2,800	2,900	2,800	-100	-3.4%	0	0.0%
Leisure-Hospitality	2,600	2,600	2,100	0	0.0%	500	23.8%
Other Services	1,200	1,200	1,200	0	0.0%	0	0.0%
Government	6,100	6,100	5,800	0	0.0%	300	5.2%

Danville MSA

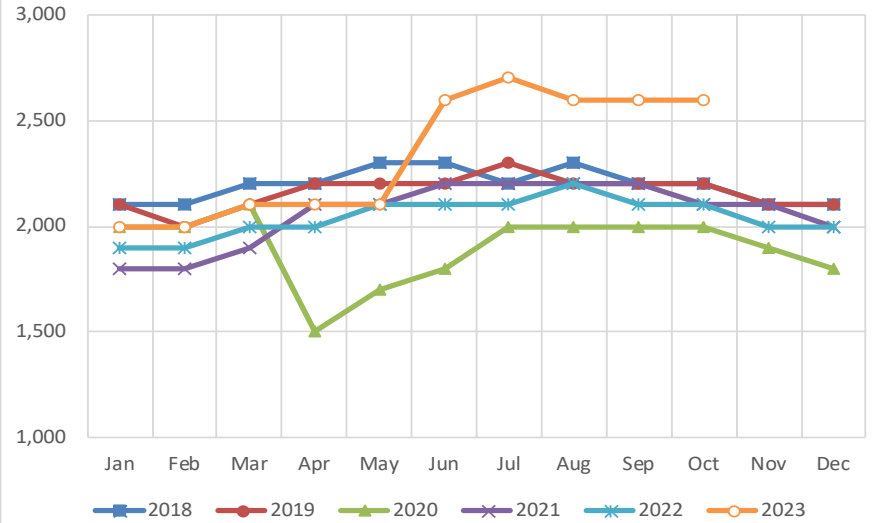
Employment by Industry

October 2023

Construction-Mining Employment

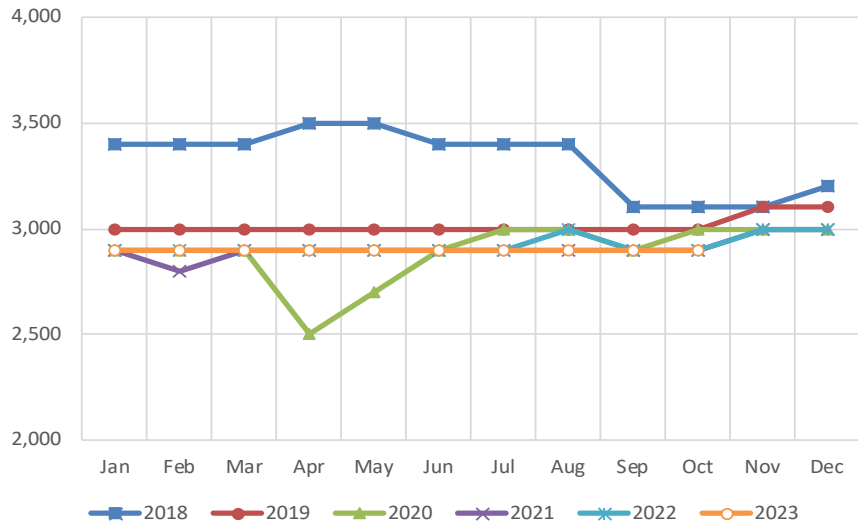


Leisure-Hospitality Employment

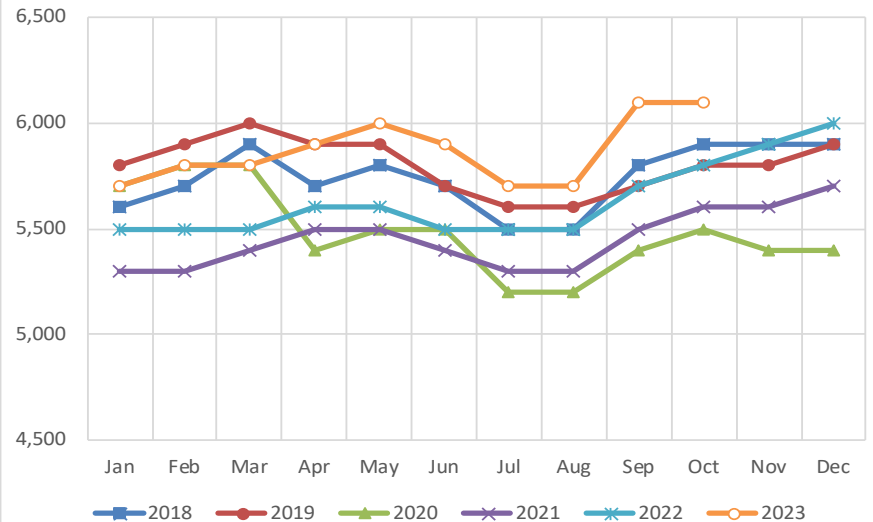


Note: Current month is preliminary

Retail Trade Employment



Government Employment

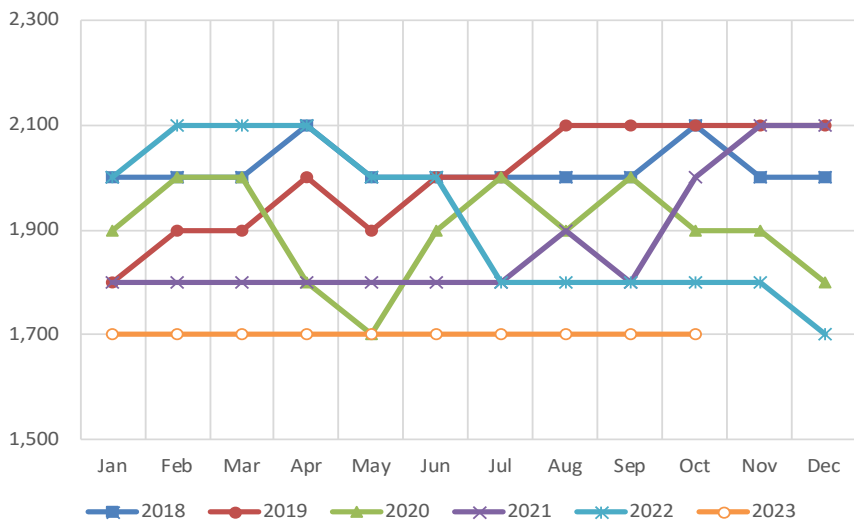


Danville MSA

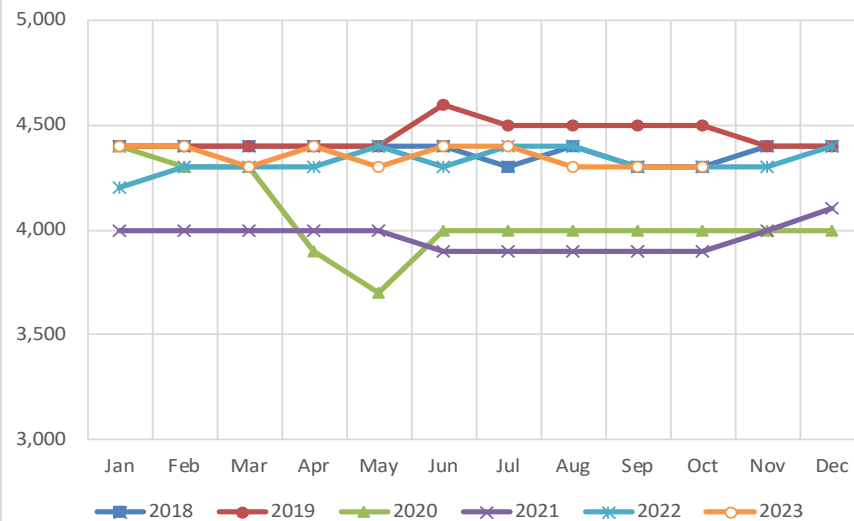
Employment by Industry

October 2023

Professional-Business Services Employment

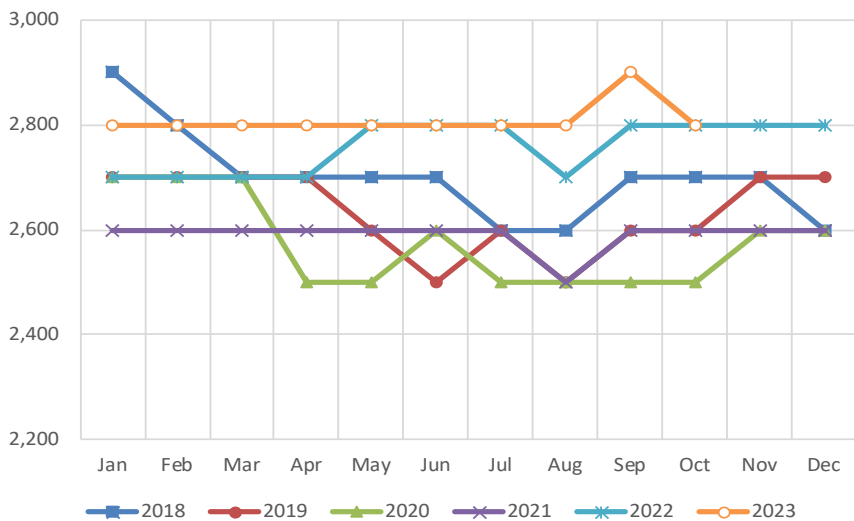


Manufacturing Employment

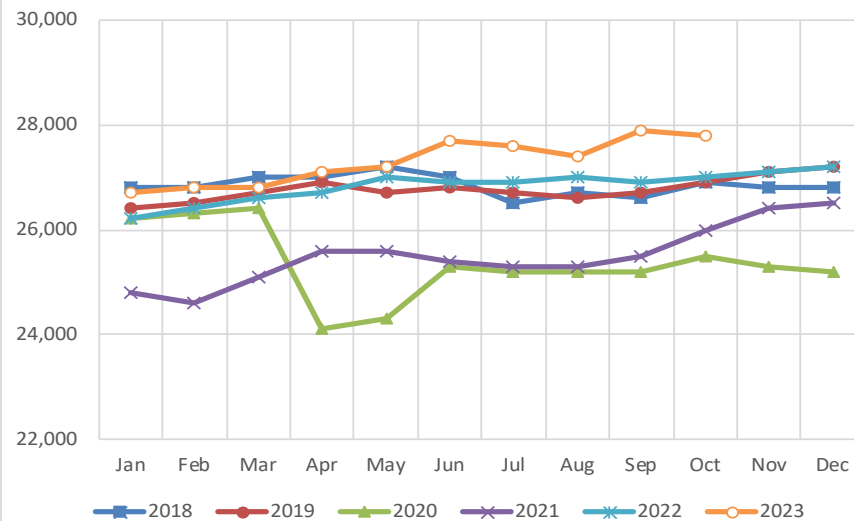


Note: Current month is preliminary

Educational-Health Services Employment



Total Nonfarm Employment



Danville MSA
Employment by Industry
October 2023

Employment by Industry Share

